

# Compatibility of OTT Hydromet software with Windows operating systems

## 1 Content

1	Content .....	1
2	Overview .....	1
3	Function of online help for network installations .....	2
4	Hydras 3 characteristics.....	3
4.1	Installation under Windows Vista/7/8 .....	3
4.2	Online Help .....	4
5	Contact .....	4

## 2 Overview

	Windows XP	Windows Vista 32/64-Bit	Windows 7 32/64-Bit	Windows 8 / 8.1 32/64-Bit	Windows 10 32/64-Bit
OTT Water Logger Operating Program (ecoLog, Orpheus Mini, CTD)	✓	✓	✓	✓	✓
OTT Data Logger Operating Program (netDL, DuoSens)	✓	✓	✓	✓	✓
OTT Hydras 3 (Basic, Standard, Pro, RX, LT)	✓	✓	✓	✓	✓
OTT Q-Review	✓	✓	✓	✓	✓
OTT Prodis 2	✓	✓	✓	✓	✓
OTT ASDO	✓	✓	✓	✓	✓
OTT SDI-12 Interface	✓	✓	✓	✓	✓
OTT Pluvio <sup>2</sup> & Pluvio <sup>2</sup> S Operating Program	✓	✓	✓	✓	✓
Hydrolab Operating Software (Hydrolab HL Sondes)	✓	✓	✓	✓	✓
Adcon addVANTAGE Pro	✓	✓	✓	✓	✓
OTT netView	✓	✓	✓	✓	✓

### 3 Function of online help for network installations

When OTT Software is stored and installed on a central server or NAS in your network, problems may occur on starting the online help. Then the help tree is still displayed correctly, but instead of help content, the note is:

“Navigation to the webpage was interrupted”  
or  
“The address is not valid”

Reason for this is a security patch from Microsoft (Update KB896358) that disables the online help in networks.

To fix the problem you have to find the correct help files (\*.chm) on your network first:

Program	Default path	Language
OTT Prodis 2	... \OTT\Prodis2\Prodis2.chm ... \OTT\Prodis2\en\Prodis2.chm	German English
OTT Water Logger Operating Program	... \OTT\OrpheusMini_CTD\Water_Logger_Onlinehelp_DE.chm ... \OTT\OrpheusMini_CTD\Water_Logger_Onlinehelp_EN.chm ... \OTT\OrpheusMini_CTD\Water_Logger_Onlinehelp_ES.chm ... \OTT\OrpheusMini_CTD\Water_Logger_Onlinehelp_FR.chm	German English Spanish French
OTT Data Logger Operating Program	... \OTT\LogoSens-DuoSens\Data_Logger_Onlinehelp_DE.chm ... \OTT\LogoSens-DuoSens\Data_Logger_Onlinehelp_EN.chm ... \OTT\LogoSens-DuoSens\Data_Logger_Onlinehelp_ES.chm ... \OTT\LogoSens-DuoSens\Data_Logger_Onlinehelp_FR.chm	German English Spanish French

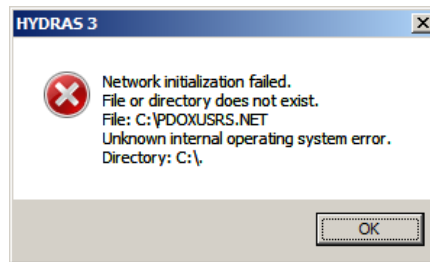
(The installation path does not have to comply with the path displayed above. If you can't find the files use the Windows search function)

Click the appropriate .chm file with the right mouse button and select „Properties“ in the menu. In the “General” tab click on the button “Allow” and “Apply” to confirm.

## 4 Hydras 3 characteristics

### 4.1 Installation under Windows Vista/7/8

When Hydras 3 is installed and started under Windows Vista/7/8, partly the following error message appears:



The cause of this error lies in the stringent security requirements of Windows Vista/7/8. By default it is not allowed to create or modify files in the folder C:\. But by default the NETDIR setting, that is required to synchronize the multi-user access to the Hydras 3 database, is set to C:\.

There are 2 ways to solve this problem on Windows Vista/7/8:

#### Run Hydras 3 with administrative rights:

Run Hydras 3 with administrative rights (right click on Hydras 3 desktop link -> Run as administrator).

Windows will ask if you want to authorize that. You have to click "Allow".

#### Set NETDIR to new directory

The other option is to set the NETDIR to a directory on which you have full permissions. For that create a new folder, i.e. "Hydras3-Data" in the directory "Documents", in which the Hydras 3 data shall be stored. In our example the folder has the path:

C:\Users\ABC\Documents\Hydras3-Data  
(In this case ABC is the user's login name)

Then you have to set NETDIR to this directory:

Click with the right mouse button on the Hydras 3 desktop link and select "Properties"

In the tab "Shortcut" the path to Hydras 3 is displayed, typically it looks like this:

"C:\Program Files\OTT\HYDRAS3\Hydras3.exe"

With the following command you set NETDIR to the folder you created before. Type the command behind the existing file path.

"netdir= C:\Users\ABC\Documents\Hydras3-Data"

The complete command line should look like this:

"C:\Program Files\OTT\HYDRAS3\Hydras3.exe" "netdir= C:\Users\ABC\Documents\Hydras3-Data"

Confirm the changes with "Apply". Now the working files of Hydras 3 are stored automatically in the new folder.

If you use Hydras 3 in a network with more than one installations, the working directory normally lies on a file server. In this case the NETDIR is typically set to this directory, because all users should have full permissions to this directory.

## 4.2 Online Help

The Hydras 3 online help cannot be displayed on a standard Windows Vista/7/8 system. Microsoft does not deliver the required program WinHlp32.exe with Windows Vista/7/8 anymore.

To use the online help the program has to be downloaded from the Microsoft website:

Links:

Windows Vista: <http://www.microsoft.com/en-en/download/details.aspx?id=5143>

Windows 7: <http://www.microsoft.com/en-en/download/details.aspx?id=91>

Windows 8: <http://www.microsoft.com/en-en/download/details.aspx?id=35449>

## 5 Contact

### General Address

OTT Hydromet GmbH

Ludwigstr. 16

87437 Kempten

Tel.: + 49 - (0)831 5617 - 0

Fax: + 49 - (0)831 5617 - 209

[info@ott.com](mailto:info@ott.com)

### HydroService:

Tel + 49 831 5617 430

Fax + 49 831 5617 439

[hydroservice@ott.com](mailto:hydroservice@ott.com)